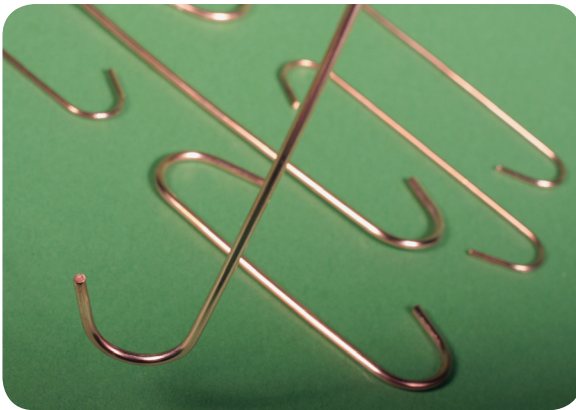
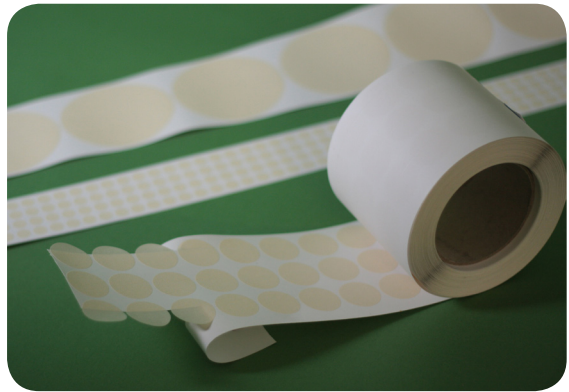
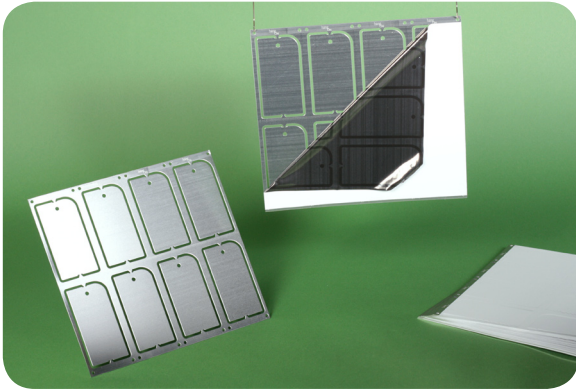


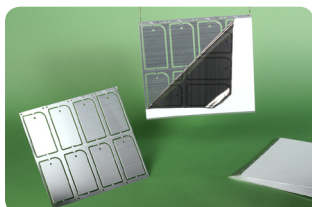
hang

Smart
11

On



HangOn Test Panels with Protective Film, KOP



Our new “knock out” test panels minimise paint build up on the panel edge due to the sacrificial frames. No hanging marks are produced due to the 4.0mm holes in the frames which allow vertical or horizontal hanging.

The test panels have a protective PE film on the prepared side (which is recognised by the large radius top right corner on each panel) to protect from scratches, corrosion and finger prints. The film is easily removed when the product is suspended. These panels are suitable for Qualicoat, GSB, QIB and ISO Standards.

Panel sets are available in 2, 4 or 8 pieces per frame and packed in re-sealable cardboard boxes.

Other types and formats are available on request.

Prod No.	No of set/	No of panels/	Size of set	Weight g/	Material
	box	set	WxHxT mm	set	
KOP 50x100 2A	200	2	65x239x0,8	34	Alu_EN_AW_5005_H12
KOP 50x100 4A	100	4	135x239x0,8	68	Alu_EN_AW_5005_H12
KOP 50x100 8A	50	8	260x239x0,8	135	Alu_EN_AW_5005_H12
KOP 50x100 2S	200	2	65x239x0,8	97	Steel DC 01
KOP 50x100 4S	100	4	130x239x0,8	194	Steel DC 01
KOP 50x100 8S	50	8	260x239x0,8	388	Steel DC 01

Discount:

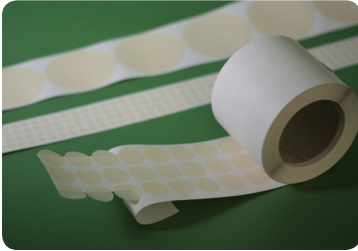
3-6 boxes: 5% discount

7-10 boxes: 10% discount

11-20 boxes: 15% discount

21-40 boxes: 20% discount

New stock program ERP - Crepe discs with slit back



With our new discproduction equipment new product possibilities arises. We therefore now offer discs in crepe paper with slit back. It will offer the same product features as our ERS only that the material is made out of paper and not polyester. This will make the discs less heat resistant but also cheaper. We believe that wet painting will be one typical application for this product.

Prod No.	Qty/roll	Diam. mm
ERP 010	5000	10
ERP 012	5000	12
ERP 014	5000	14
ERP 015	5000	15
ERP 016	4000	16
ERP 018	4000	18
ERP 019	4000	19
ERP 020	4000	20
ERP 022	2000	22
ERP 023	2000	23
ERP 024	2000	24
ERP 025	2000	25
ERP 028	2000	28
ERP 030	2000	30
ERP 032	2000	32
ERP 035	2000	35
ERP 040	1000	40
ERP 046	1000	46
ERP 048	500	48
ERP 050	500	50
ERP 055	500	55
ERP 060	500	60
ERP 070	500	70
ERP 080	500	80
ERP 090	500	90
ERP 100	500	100

We start to offer a stock program with sizes according the table above. However we have tools for all standard ERS-sizes and a few more, which will give a competitive price for a reasonable volume. Of course we are also able to produce special forms. Just call us for an offer!

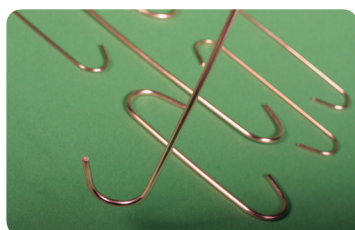
Stock program 16 mm hooks



We now launch a new stock program for heavy 16 mm hooks for immediate delivery. It will have radius 25 mm ends.

Prod No.	Qty/box
200x16,0 PRx2	20
400x16,0 PRx2	20
600x16,0 PRx2	20
800x16,0 PRx2	20
1000x16,0 PRx2	20

Stock program of copper hooks



We have known for a long time that there is demand in the galvanic industry for hooks made out of copper and now we have decided to open a stock program although it is a bit outside our target market. The problem with copper is that is volatile and very expensive, approx. 15 times the price of steel.

This together with very long lead times for raw material will make it difficult to have list prices and surcharge in the same way as we have for ordinary steel hooks.

Maybe we find a way to handle when we learn the market better but for a start you will have to ask us for quotation.

Prod No.	Qty/box
CU050x2,0 PRx2	2000
CU075x2,0 PRx2	1300
CU075x3,0 PRx2	500
CU100x2,0 PRx2	800
CU100x3,0 PRx2	400
CU150x2,0 PRx2	700
CU150x3,0 PRx2	300